

Violin 2

Vispolske-medley

Arr.:
K-J Ankarblom
2026-02-05

♩ = ca. 108

5

9

13

18

22

26

27 *soli*

30

Violin 2

Vispolske-medley

35 "synkop-accent-stråk" *sim.*

p < *mf* *p* < *mf* *p* < *mf*

41 43 *f*

46

52 55

58 59 non div. 63 *p*

64 69 *mp* *pp* *cresc.*

71 75 *mf* *f*

76 79

81 83 *mf* *cresc.*

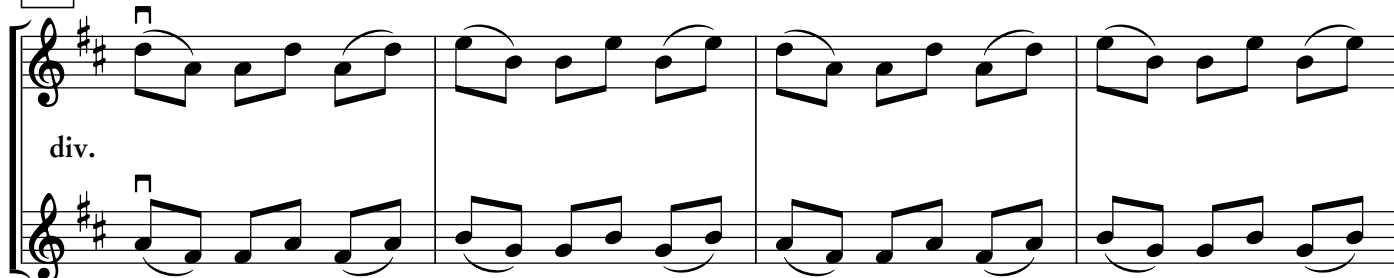
Violin 2

Vispolske-medley

85



89



93

unis.

95



98



103



107



111



115



Violin 2

Vispolske-medley

119

div.

Measures 119-122. The key signature is two sharps (F# and C#). The music is in a 4/4 time signature. Measure 119 starts with a square box above the staff. The melody is played with a 'div.' (divisi) instruction. The bottom staff has a 'V' mark at the end of measure 122.

123

ff *f*

ff *f*

Measures 123-126. The key signature is two sharps (F# and C#). The music is in a 4/4 time signature. Measure 123 has a '3' above the staff. Measures 124 and 125 have 'ff' and 'f' dynamic markings. Measure 126 has a 'V' mark at the end of the staff.

127

unis.

ff

Measures 127-130. The key signature is two sharps (F# and C#). The music is in a 4/4 time signature. Measure 127 has a 'ff' dynamic marking. The music is marked 'unis.' (unison).

131

Measures 131-134. The key signature is two sharps (F# and C#). The music is in a 4/4 time signature. The melody continues with eighth and sixteenth notes.

135

div.

Measures 135-138. The key signature is two sharps (F# and C#). The music is in a 4/4 time signature. Measure 135 has a square box above the staff. The music is marked 'div.' (divisi).

139

unis.

Measures 139-142. The key signature is two sharps (F# and C#). The music is in a 4/4 time signature. Measure 139 has a 'V' mark above the staff. The music is marked 'unis.' (unison). Measure 142 has a 'V' mark at the end of the staff.